

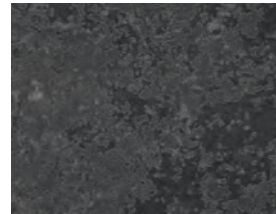
Übersicht Dekore



3615 *Fine Ceramic Anthracite*



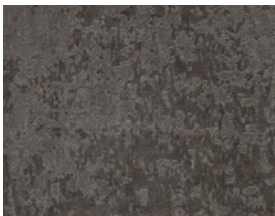
3617 *Fine Ceramic Grey*



3633 *Metall Platte Grau*



3635 *Campino Patina*



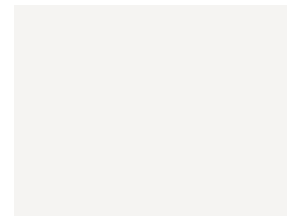
3636 *Metall Versicolor*



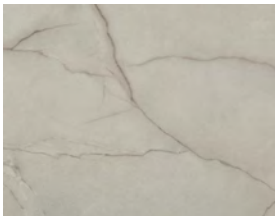
3637 *Campino Concrete*



3638 *Schwarz*



3646 *C-Weiss*



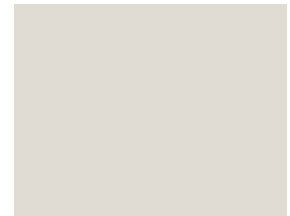
3655 *Mahal*



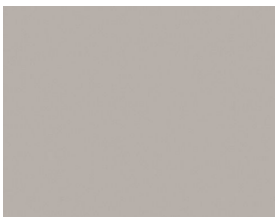
3668 *Goldfinch*



3672 *Cortina Grey*



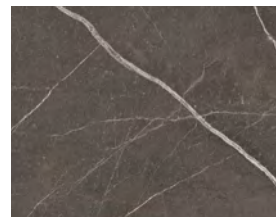
3673 *Lana Grey*



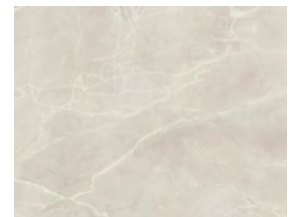
3674 *Cement Grey*



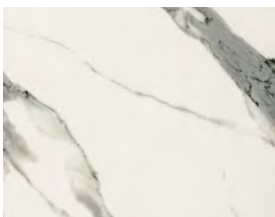
3675 *Boston Terrazzo*



3676 *Dark Pulpis*



3677 *White Kandia*



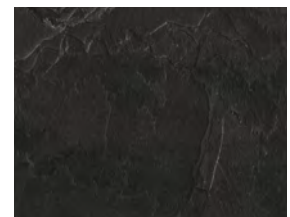
3678 *Marble Arabesque*



3679 *Nordic Larch*



3687 *Chalet Oak Beige*



3688 *Schwarzschiefer*

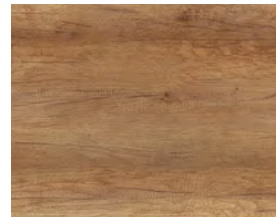
Übersicht Dekore



3689 *Juno*



3692 *Windeiche Beige*



3693 *Windeiche Honig*



3694 *Santiago Eiche*



3695 *Beton weiß*



3699 *Delios Dunkel*



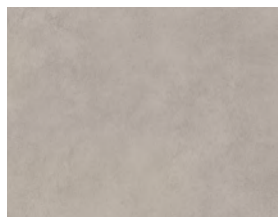
3700 *Zion*



3701 *Onyx Alba*



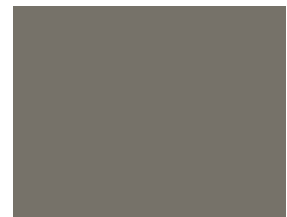
3702 *Jade Schiefer*



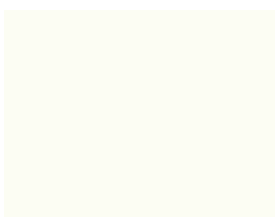
3703 *Semento*



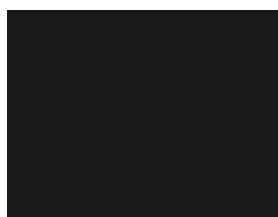
3704 *Yule Marmor*



3705 *Taupe*



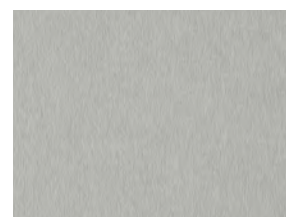
3706 *Weiß AP*



3707 *Schwarz AP*



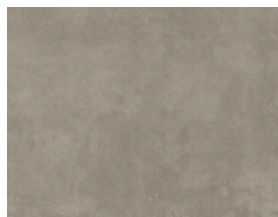
3708 *Lavagrau*



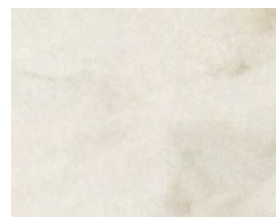
3709 *Alu gebürstet*



3710 *Steingrau*



3711 *Silbergrau*



3712 *Virtuous*

Bei dunklen Farben sieht man Kratzer, Staub und Abnutzung stärker als bei helleren texturierten Farben. Daher empfehlen wir, diese Farben nicht für Anwendungen zu verarbeiten, deren Oberfläche stark strapaziert wird. Diese Farben sind eher für Anwendungen mit leichter Beanspruchung geeignet.

Übersicht Dekore in alphabetischer Reihenfolge



Dekor Nr.	Dekor	PG	Kernfarbe	Status		Max. Plattenlänge
3709	Alu gebürstet	1	schwarz	Lager	X	4050
3695	Beton weiß	1	schwarz		X	4050
3675	Boston Terrazzo	1	schwarz	Lager	X	4050
3637	Campino Concrete	1	schwarz	Lager	X	4050
3635	Campino Patina	1	schwarz	Lager	X	4050
3674	Cement Grey	1	schwarz		X	4050
3687	Chalet Oak Beige	1	schwarz		X	4050
3672	Cortina Grey	1	schwarz		X	4050
3646	C-Weiss	1	schwarz		X	4050
3676	Dark Pulpis	1	schwarz	Lager	X	4050
3699	Delios Dunkel	1	schwarz	Lager	X	4050
3615	Fine Ceramic Anthracite	1	schwarz	Lager	X	4050
3617	Fine Ceramic Grey	1	schwarz		X	4050
3668	Goldfinch	2	schwarz		X	4150
3702	Jade Schiefer	1	schwarz	Lager	X	4050
3689	Juno	1	schwarz	Lager	X	4050
3673	Lana Grey	1	schwarz		X	4050
3708	Lavagrau	2	schwarz	Lager	0	4050
3655	Mahal	2	grau		X	4150
3678	Marble Arabesque	1	schwarz	Lager	X	4050
3633	Metall Platte Grau	1	schwarz	Lager	X	4050

Dekor Nr.	Dekor	PG	Kernfarbe	Status		Max. Plattenlänge
3636	Metall Versicolor	1	schwarz	Lager	X	4050
3679	Nordic Larch	1	schwarz		X	4050
3701	Onyx Alba	1	schwarz	Lager	X	4050
3694	Santiago Eiche	1	schwarz		X	4050
3707	Schwarz AP	2	schwarz	Lager	0	4050
3638	Schwarz	1	schwarz	Lager	X	4050
3688	Schwarzschiefer	1	schwarz	Lager	X	4050
3703	Semento	1	schwarz	Lager	X	4050
3711	Silbergrau	1	schwarz	Lager	X	4050
3710	Steingrau	1	schwarz	Lager	X	4050
3705	Taupe	2	schwarz	Lager	0	4050
3712	Virtuous	2	weiss		X	4150
3706	Weiß AP	3	weiss	Lager	0	4050
3677	White Kandia	1	schwarz	Lager	X	4050
3692	Windeiche Beige	1	schwarz	Lager	X	4050
3693	Windeiche honig	1	schwarz	Lager	X	4050
3704	Yule Marmor	1	schwarz	Lager	X	4050
3700	Zion	1	schwarz	Lager	X	4050

x = Unterseite gleiche Farbe wie Oberseite
o = Gegenzug dekorgleich Perl-Stuktur